

# WORCESTER VOLUNTEER FIRE DEPARTMENT WORCESTER, PA

SO.138971

## CUSTOM 42 RESCUE PUMPER E-ONE TYPHOON X LONG 4X2 CHASSIS

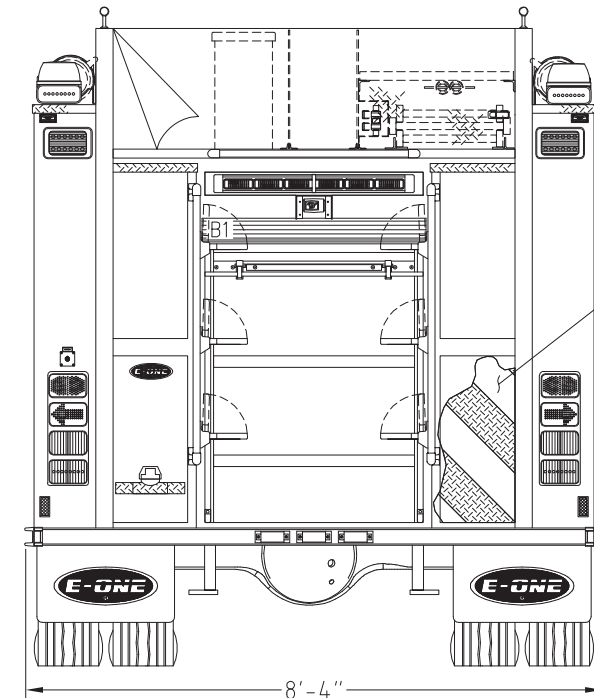
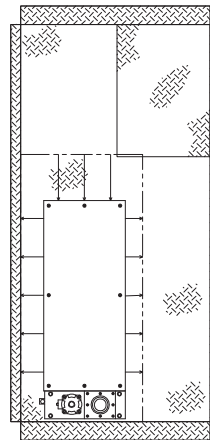
2000 GPM HALE QMAX PUMP	HOSE LOAD:
740 GALLON WATER	1200' OF 5.00" LDH
40 GALLON CLASS "A" FOAM CELL	300' OF 3.00" DJ

COMPT.	OPENING		INTERIOR DIMENSION			
L1/R1	40W	59H	42W	3H	12D	UPPER
			42W	56H	26D	LOWER
L2/R2	54W	25H	56W	3H	12D	UPPER
			56W	22H	26D	LOWER
			42W	3H	12D	FRONT UPPER
			42W	56H	26D	FRONT LOWER
			14W	3H	10D	REAR UPPER
			14W	56H	24D	REAR LOWER
B1	36W	43H	38W	52H	26D	

THIS DRAWING IS FOR REFERENCE PURPOSES. ALL DIMENSIONS ARE SUBJECT TO MINOR VARIATIONS DUE TO MANUFACTURING PROCESSES.

**APPROVED FOR PRODUCTION**

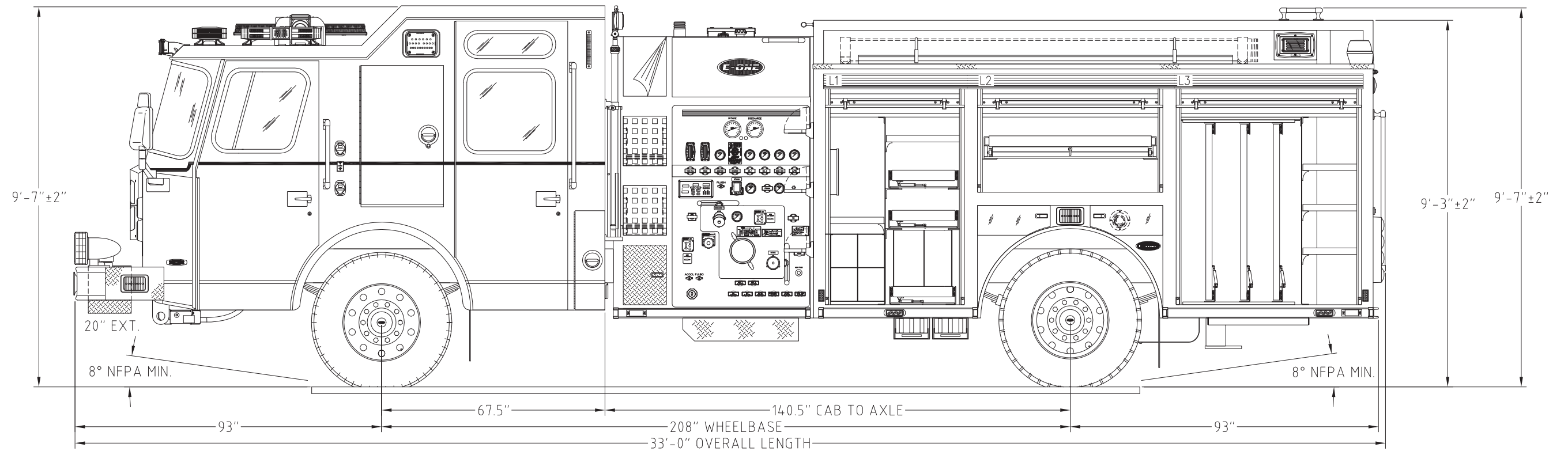
DESIGNER: J.DRAY DATE: 2014-JUN-09



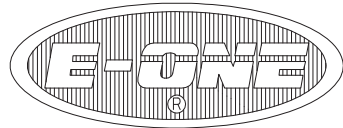
CHEVRON "A" STYLE  
6" 3M "DIAMOND GRADE"  
STRIPING

8'-4"

HOSEBED HEIGHT:  
(FOR REFERENCE ONLY)  
TO TAILBOARD: 77"  
TO GROUND: 101"



DCALLAGHER	C	RFP	2014-AUG-08	DCALLAGHER
DCALLAGHER	B	RFP	2014-JUN-09	DRAY
DCALLAGHER	A	INITIAL RELEASE	2014-MAY-08	DRAY
DRAWN BY	REV	DESCRIPTION	DATE	APPROVED
		APPROVAL REVISIONS		SHEET 1 OF 2



# WORCESTER VOLUNTEER FIRE DEPARTMENT

WORCESTER, PA

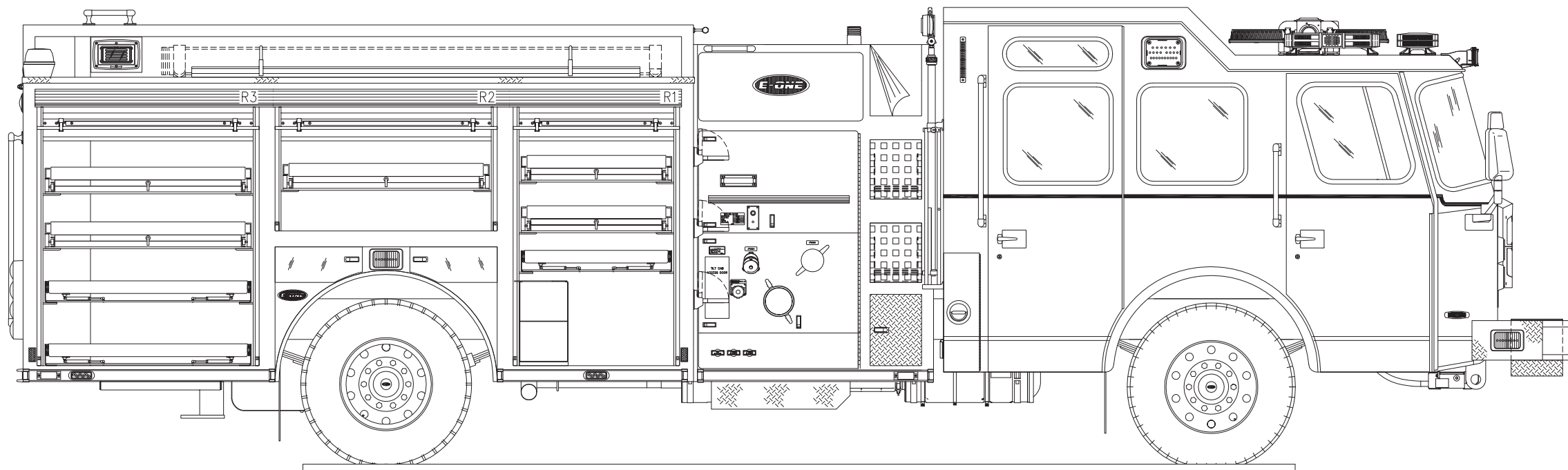
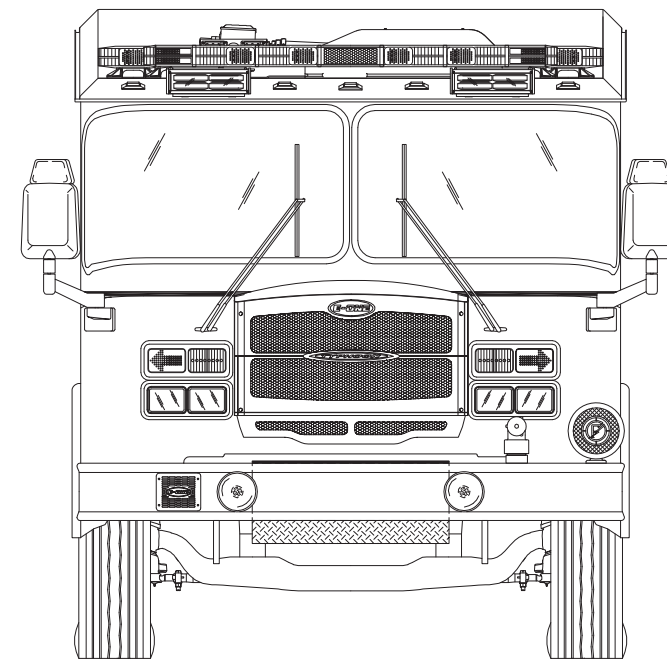
SO.138971

CUSTOM 42 RESCUE PUMPER  
E-ONE TYPHOON X LONG 4X2 CHASSIS

THIS DRAWING IS FOR REFERENCE PURPOSES. ALL DIMENSIONS ARE  
SUBJECT TO MINOR VARIATIONS DUE TO MANUFACTURING PROCESSES.

APPROVED FOR PRODUCTION

DESIGNER: J.DRAY DATE: 2014-JUN-09



APPROVAL	REVISIONS	DESCRIPTION	DATE	APPROVED
DCALLAGHER	C	RFP	2014-AUG-08	DCALLAGHER
DCALLAGHER	B	RFP	2014-JUN-09	DRAY
DCALLAGHER	A	INITIAL RELEASE	2014-MAY-08	DRAY
DRAWN BY	REV	DESCRIPTION	DATE	APPROVED