

WINSLOW TOWNSHIP F.D. SICKLERVILLE, NJ

S.O. 142552-553 / Q90353

CUSTOM 42 RESCUE PUMPER

E-ONE TYPHOON X LONG CAB 4X2 CHASSIS

2000 GPM HALE QMAX PUMP		HOSE LOAD:	
760 GALLON WATER TANK		200' OF 3.00 DJ	
20 GALLON INTEGRAL CLASS "A" FOAM		1000' OF 4.00 LDH	
		400' OF 3.00 DJ	

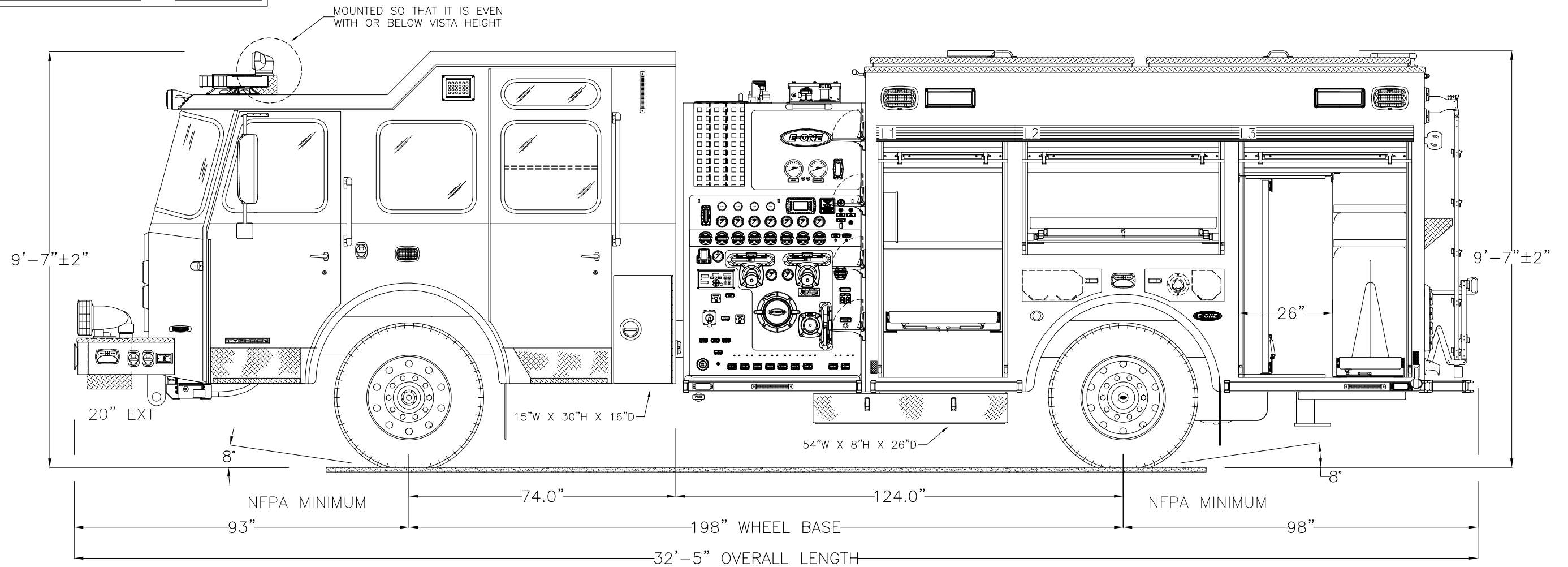
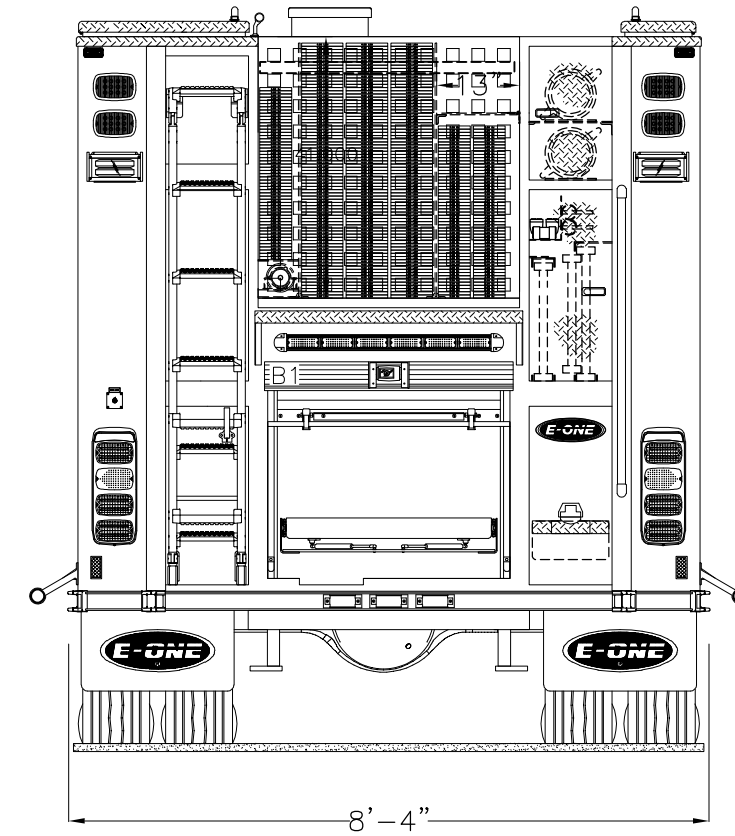
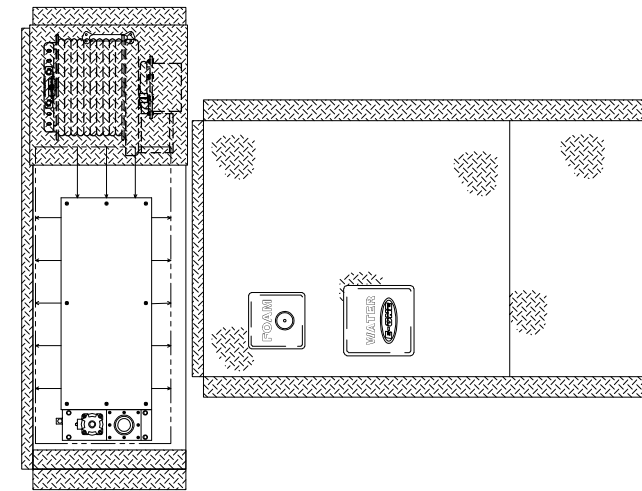
COMPT.	OPENING		INTERIOR DIMENSION			
L1	34W	59H	36W	3H	12D	UPPER
			36W	56H	26D	LOWER
R1	34W	59H	36W	25H	12D	UPPER
			36W	30H	26D	LOWER
L2	54W	25H	56W	3H	12D	UPPER
			56W	22H	26D	LOWER
R2	54W	25H	56W	25H	12D	
L3	46W	59H	48W	3H	12D	UPPER
			48W	56H	26D	LOWER
R3	46W	59H	48W	25H	12D	UPPER
			48W	30H	26D	LOWER
B1	36W	25H	38W	34H	26D	

THIS DRAWING IS FOR REFERENCE PURPOSES. ALL DIMENSIONS ARE SUBJECT TO MINOR VARIATIONS DUE TO MANUFACTURING PROCESSES.

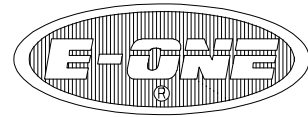
APPROVED FOR PRODUCTION

DESIGNER: ANDREW PARK DATE: 02-18-19

HOSEBED HEIGHT:
(FOR REFERENCE ONLY)
TO TAILBOARD: 56"
TO GROUND: 70"



APARK	E	ACTION ITEMS	2019-MAR-19	APARK
APARK	D	RFP	2019-FEB-18	APARK
APARK	C	RFC	2018-DEC-21	APARK
APARK	B	RFC	2018-OCT-23	APARK
APARK	A	ORDER REVIEW 1	2018-SEP-28	APARK
DRAWN BY	REV	DESCRIPTION	DATE	APPROVED
		APPROVAL REVISIONS		SHEET 1 OF 2

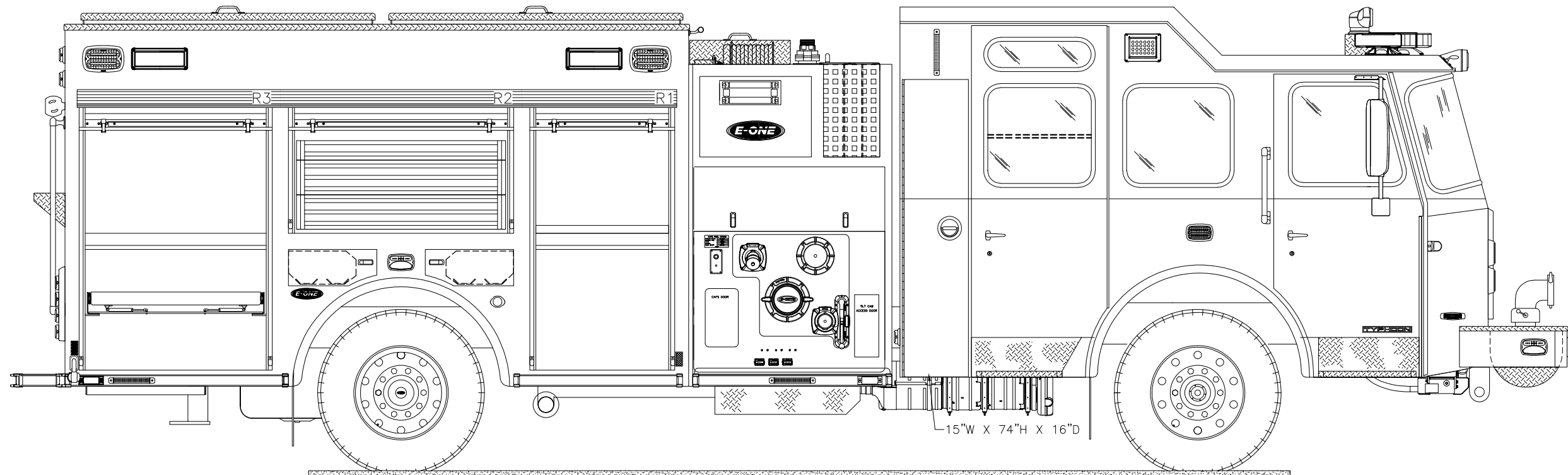
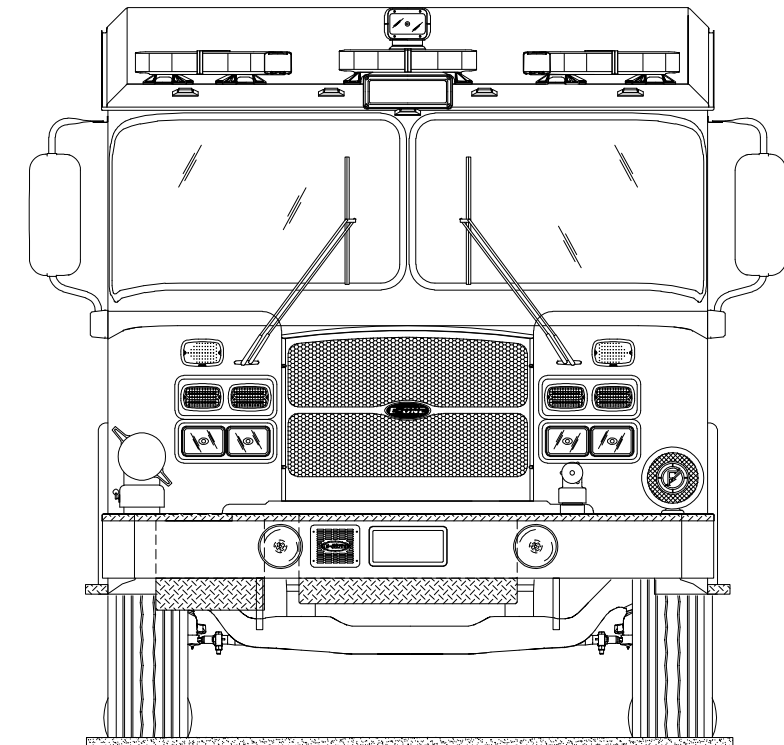


WINSLOW TOWNSHIP F.D.
SICKLERVILLE, NJ
S.O. 142552-553 / Q90353
CUSTOM 42 RESCUE PUMPER
E-ONE TYPHOON X LONG CAB 4X2 CHASSIS

THIS DRAWING IS FOR REFERENCE PURPOSES. ALL DIMENSIONS ARE SUBJECT TO MINOR VARIATIONS DUE TO MANUFACTURING PROCESSES.

APPROVED FOR PRODUCTION

DESIGNER: ANDREW PARK DATE: 02-18-19



APARK	E	ACTION ITEMS	2019-MAR-19	APARK
APARK	D	RFP	2019-FEB-18	APARK
APARK	C	RFC	2018-DEC-21	APARK
APARK	B	RFC	2018-OCT-23	APARK
APARK	A	ORDER REVIEW 1	2018-SEP-28	APARK
DRAWN BY	REV	DESCRIPTION	DATE	APPROVED
		APPROVAL REVISIONS		SHEET 2 OF 2