

# EGG HARBOR TOWNSHIP CARDIFF VFC EGG HARBOR TOWNSHIP, NJ

SO141083 / Q80951

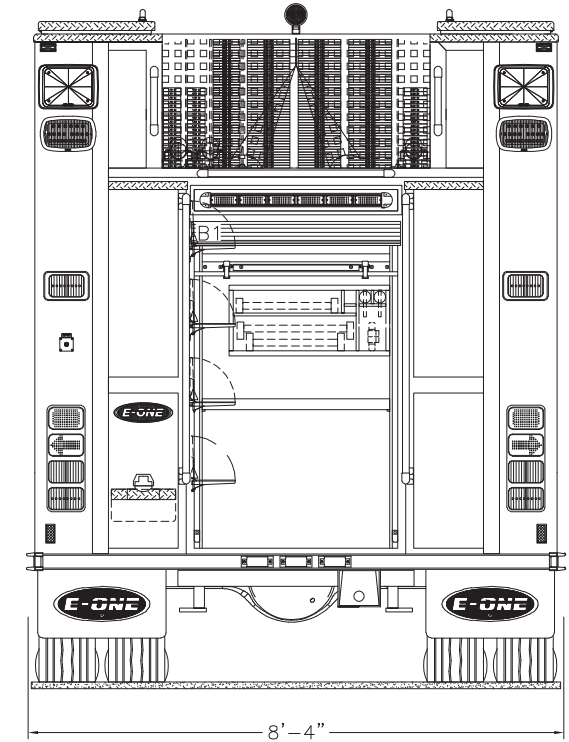
CUSTOM 48 RESCUE PUMPER  
TYPHOON X LONG CAB 4X2 CHASSIS

THIS DRAWING IS FOR REFERENCE PURPOSES. ALL DIMENSIONS ARE  
SUBJECT TO MINOR VARIATIONS DUE TO MANUFACTURING PROCESSES.

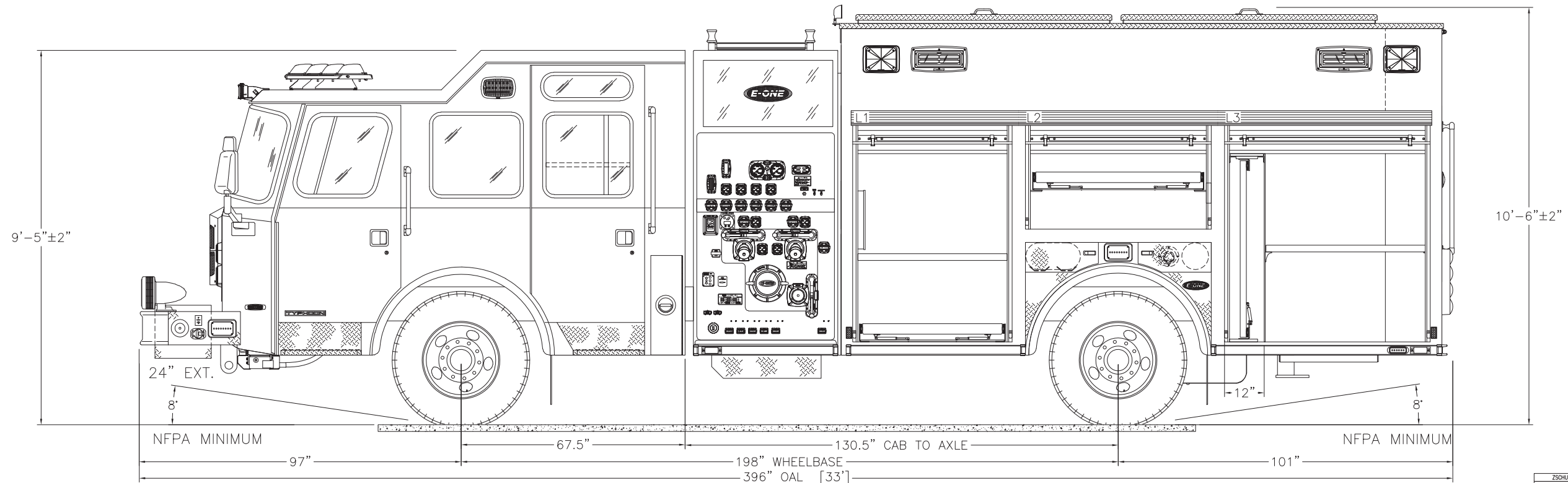
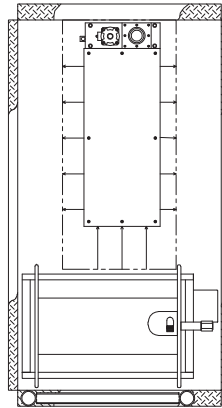
APPROVED FOR PRODUCTION

DESIGNER: ZACHARY R SCHULTZ DATE: 01/30/2017

1500 GPM HALE QMAX PUMP					HOSE LOAD:					
1000 GALLON POLY III WATER TANK					200' OF 1.75" DJ					
30 GALLON INTEGRAL CLASS A FOAM					200' OF 1.75" DJ					
HALE 2.1A FOAMLOGIX FOAM SYSTEM					300' OF 3.00" DJ					
10KW HARRISON MCR HYD GENERATOR					1200' OF 5.00" LDH					
					200' OF 2.50" DJ					
COMPT.	OPENING		INTERIOR DIMENSION							
L1/R1	46W	59H	48W	3H	12D	UPPER				
			48W	56H	26D	LOWER				
L2/R2	54W	25H	56W	3H	12D	UPPER				
			56W	22H	26D	LOWER				
L3/R3	60W	68H	48W	3H	12D	FRONT UPPER				
			48W	56H	26D	FRONT LOWER				
			14W	3H	11D	REAR UPPER				
			14W	56H	24D	REAR LOWER				
B1	36W	50H	38W	52H	26D					



HOSEBED HEIGHT:  
(FOR REFERENCE ONLY)  
TO TAILBOARD: 72"  
TO GROUND: 96"



ZSCHULTZ	B	RFC	2017-JAN-25	ZSCHULTZ
ZSCHULTZ	A	INITIAL RELEASE	2016-DEC-12	ZSCHULTZ
DRAWN BY	REV	DESCRIPTION	DATE	APPROVED
PROPOSAL REVISIONS				SHEET 1 OF 2



# EGG HARBOR TOWNSHIP CARDIFF VFC EGG HARBOR TOWNSHIP, NJ

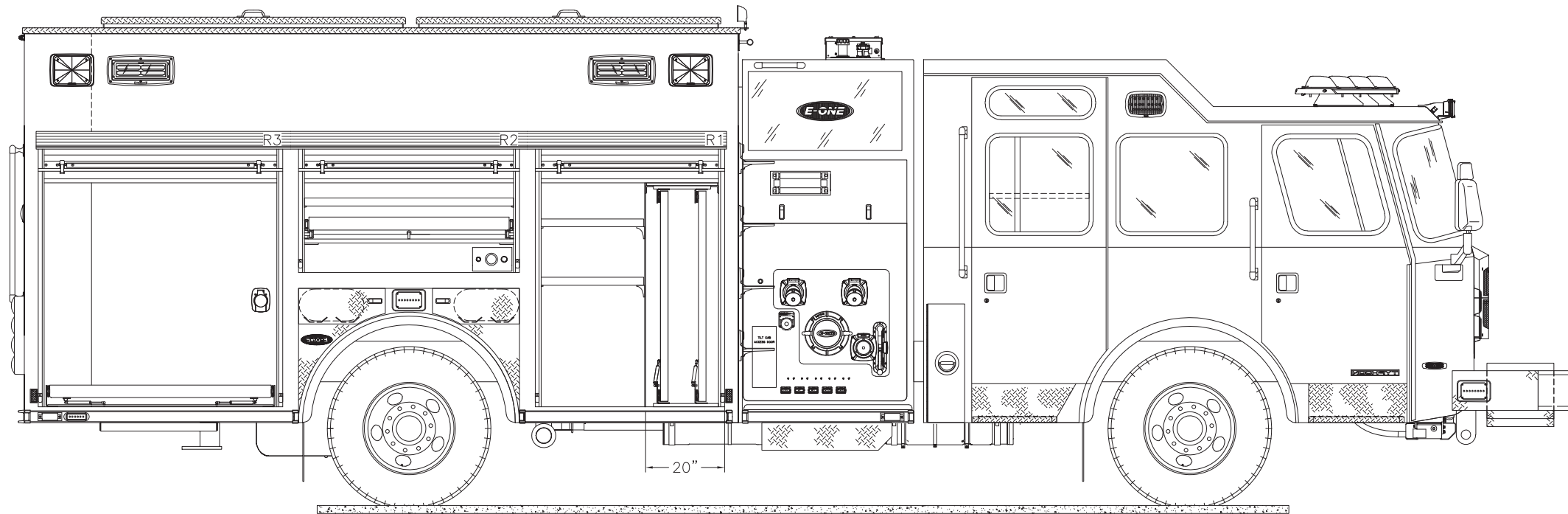
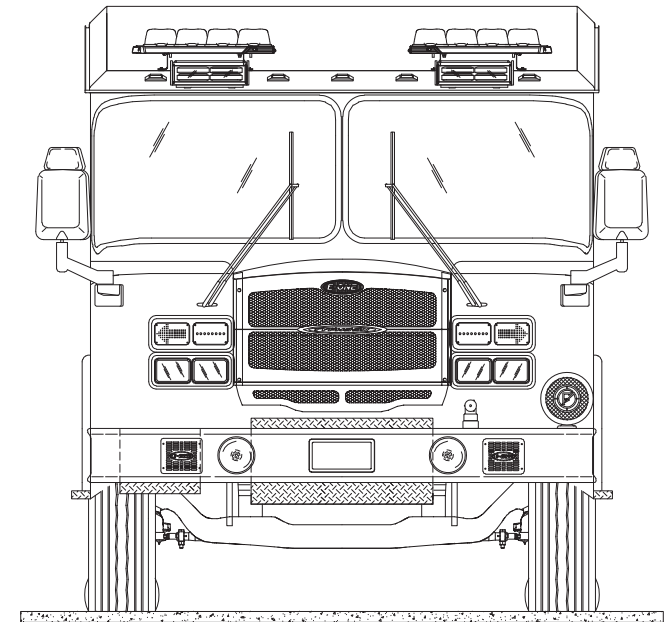
SO141083 / Q80951

CUSTOM 48 RESCUE PUMPER  
TYPHOON X LONG CAB 4X2 CHASSIS

THIS DRAWING IS FOR REFERENCE PURPOSES. ALL DIMENSIONS ARE  
SUBJECT TO MINOR VARIATIONS DUE TO MANUFACTURING PROCESSES.

APPROVED FOR PRODUCTION

DESIGNER: ZACHARY R. SCHULTZ DATE: 01/30/2017



ZSCHULTZ	B	RFC	2017-JAN-25	ZSCHULTZ
ZSCHULTZ	A	INITIAL RELEASE	2016-DEC-12	ZSCHULTZ
DRAWN BY	REV	DESCRIPTION	DATE	APPROVED
PROPOSAL REVISIONS				SHEET 2 OF 2